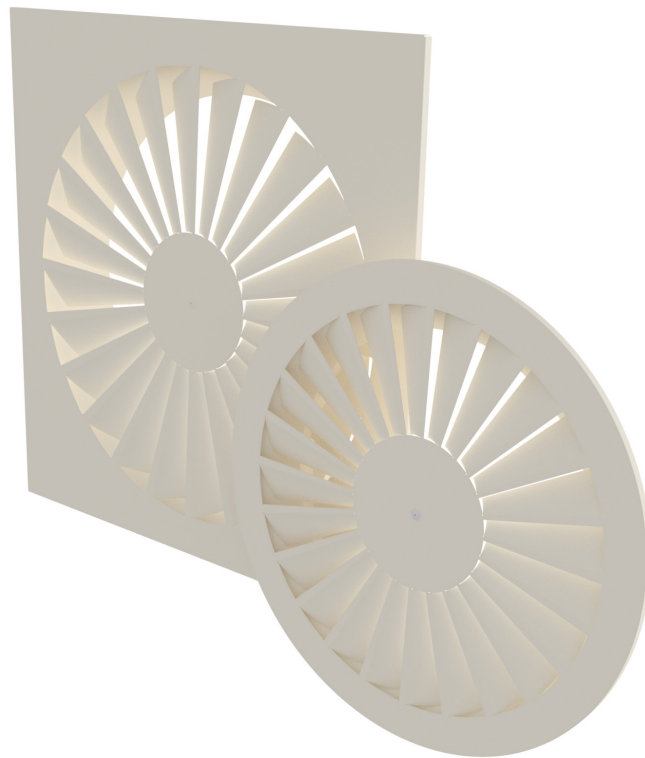


STRAIGHT VANE SWIRL DIFFUSER



STRAIGHT VANE SWIRL DIFFUSER

SSW Straight vane swirl diffusers are suitable for ceiling mounting and can be manufactured to suit most ceiling tile arrangements.

The SSW straight vane swirl diffuser offers excellent induction of room air and the rapid decay of supply air velocities and air temperature differentials.

Available in square or circular formats, the SSW can be manufactured to suit standard lay-in, tegular and clip-in ceiling systems.

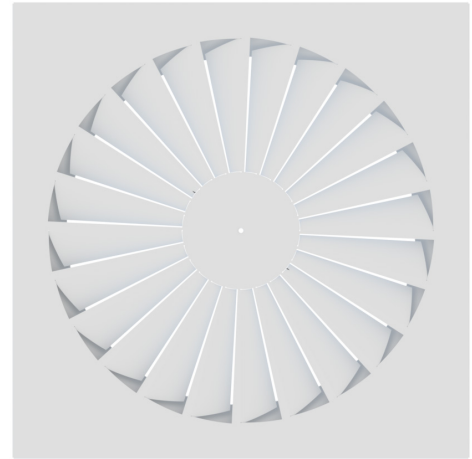
SSW swirl diffusers are also suitable for exposed ceiling applications.

Bespoke plenum boxes can be supplied to suit and are available in either galvanized or painted finish and with acoustic & thermal foam lining.

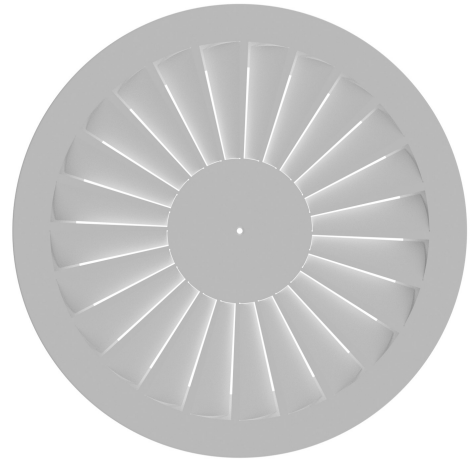
Tegular frame options are available to suit most ceiling systems



SSW-24-L Lay-in Ceiling Type



SSW-24-C Circular Type

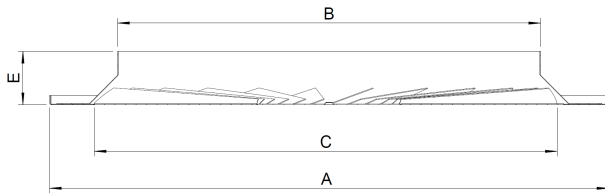


SSW-24-C Circular Exposed Ceiling Type



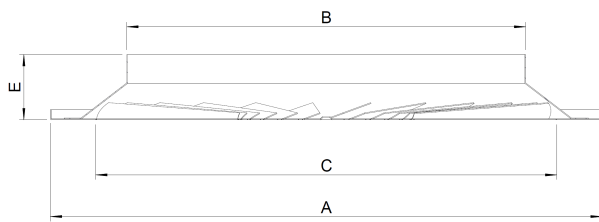
Frame Options, Dimensional Information & Ordering

SSW-24-L Lay-in Ceiling Type



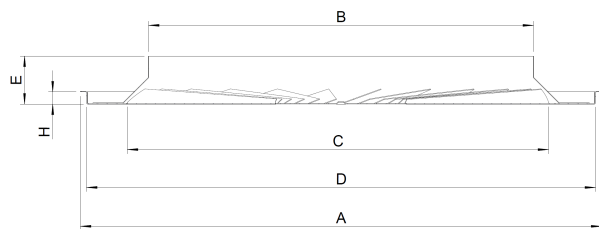
Nom Size	A	B \emptyset	C \emptyset	E
200	595	197	250	55
300	595	297	350	55
350	595	347	400	55
450	595	447	500	55
500	595	500	500	55

SSW-24-C Circular Type



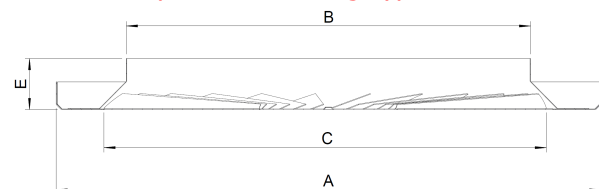
Nom Size	A \emptyset	B \emptyset	C \emptyset	E
200	326	197	250	55
300	426	297	350	55
350	480	347	400	55
450	590	447	500	55
500	590	497	500	55

SSW-24-T Tegular Ceiling Type



Nom Size	A \emptyset	B \emptyset	C \emptyset	D 24T/15T	E
200	595	197	250	574 - 584	55
300	595	297	350	574 - 584	55
350	595	347	400	574 - 584	55
450	595	447	500	574 - 584	55
500	595	500	500	574 - 584	55

SSW-24-M Clip-in Metal Ceiling Type



Nom Size	A	B \emptyset	C \emptyset	E
200	599	197	250	55
300	599	297	350	55
350	599	347	400	55
450	599	447	500	55
500	599	500	500	55

Ordering

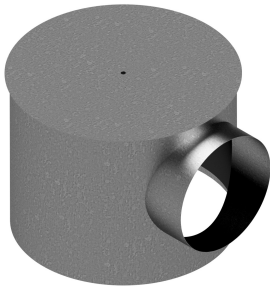
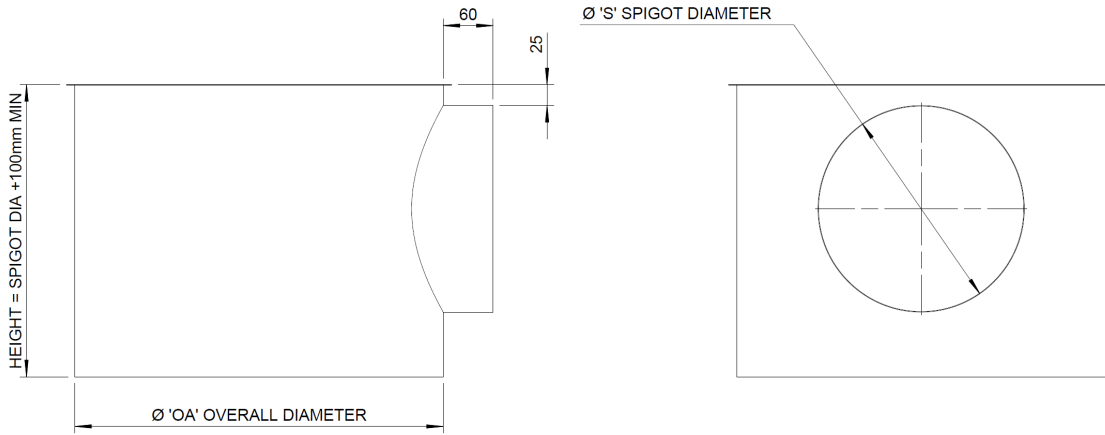
Type	No of Blades	Edge Detail	Tegular Depth	Size	Overall Size	RAL Colour
SSW	24	L - Lay-in Grid		200	595x595	
		T15 - Tegular 584x584	e.g. 8mm	300	599x599	e.g. RAL9010
		T24 - Tegular 574x574		350		
		M - Clip-in Metal Tile		450		
		C - Circular		500		

e.g. 10no. SSW-24-L-450-595x595-RAL9010

Plenum Box Dimensions & Standards

All plenum boxes are available with 6mm or 12mm Class 'O' foam lining. Additional spigots and bespoke boxes are available on request, please contact the Sales Office to discuss your requirements.

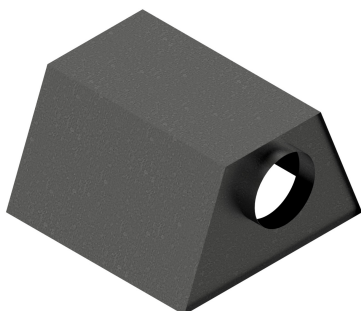
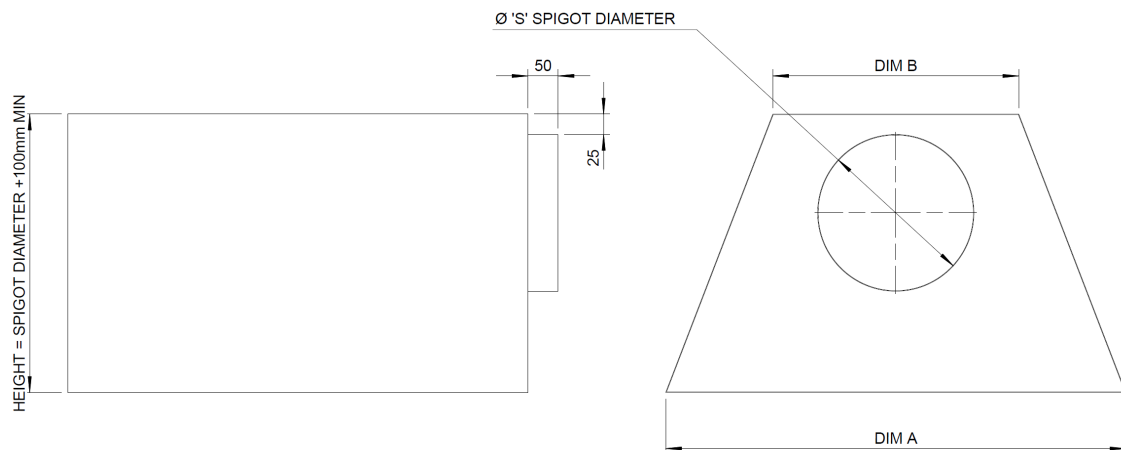
Circular Plenums



Nom Diffuser Size	OA Ceiling Type	OA Exposed Type
200	200	324
300	300	424
350	350	478
450	450	588
500	500	588

Square Plenums

Tapered boxes are supplied as standard, straight sided boxes are available on request.



Nom Diffuser Size	DIM A	DIM B
200	330	197
300	430	197
350	474	310
450	564	310
500	564	310

Performance Data

200 Dia	I/s	10	15	20	25	30	35	40	45	50
	Throw m	0.3-0.5	0.4-0.8	0.5-1.0	0.6-1.3	0.8-1.5	0.9-1.8	1.0-2.2	1.2-2.3	1.3-2.7
	Pa	1	3	5	9	12	17	22	28	34
	NC					17	22	25	29	32
	I/s	55	60	65	70					
	Throw m	1.4-2.8	1.5-3.1	1.7-2.3	1.8-3.6					
	Pa	41	49	57	67					
	NC	34	37	39	41					
300 Dia	I/s	30	35	40	45	50	55	60	65	70
	Throw m	0.5-1.0	0.6-1.2	0.7-1.4	0.7-1.5	0.8-1.7	0.9-1.9	1.2-2.2	1.2-2.3	1.2-2.4
	Pa	3	4	5	6	8	9	11	13	15
	NC						16	19	21	23
	I/s	75	80	85	90	95	100	105	110	115
	Throw m	1.3-2.5	1.4-2.7	1.5-2.9	1.8-3.1	2.1-3.2	2.2-3.4	2.6-3.6	2.6-3.7	2.6-3.9
	Pa	17	20	22	25	28	31	33	38	41
	NC	25	27	29	30	32	33	35	36	37
350 Dia	I/s	50	55	60	65	70	80	90	100	110
	Throw m	0.8-1.6	0.8-1.7	1.0-1.9	1.1-2.0	1.1-2.2	1.2-2.5	1.5-2.8	1.5-3.1	1.5-3.4
	Pa	4	4	5	6	7	9	12	14	17
	NC						17	20	23	26
	I/s	120	130	140	150	160	170	180	190	200
	Throw m	1.8-3.8	2.0-4.1	2.1-4.4	2.3-4.7	2.4-5.0	2.5-5.3	2.8-5.6	2.4-5.9	3.0-6.3
	Pa	21	24	28	32	36	41	46	51	57
	NC	28	31	33	35	36	38	40	41	43
450 Dia	I/s	75	80	90	100	110	120	130	140	150
	Throw m	0.8-1.8	0.9-1.9	1.0-2.2	1.1-2.4	1.2-2.6	1.4-2.9	1.5-3.1	1.6-3.4	1.8-3.6
	Pa	5	6	7	9	11	13	15	18	20
	NC					16	18	21	23	25
	I/s	160	170	180	190	200	210	220	230	240
	Throw m	1.8-3.8	2.0-4.1	2.1-4.3	2.3-4.6	2.4-4.8	2.4-5.0	2.5-5.3	2.7-5.5	2.8-5.8
	Pa	23	26	29	33	36	40	44	48	52
	NC	26	28	30	31	33	34	35	37	38
500 Dia	I/s	100	110	120	130	140	150	160	170	180
	Throw m	0.8-2.0	1.0-2.2	1.1-2.4	1.2-2.6	1.3-2.8	1.4-3.0	1.5-3.2	1.6-3.4	1.8-3.6
	Pa	6	7	8	9	11	13	14	16	18
	NC					15	17	18	20	22
	I/s	190	200	210	220	230	240	260	280	300
	Throw m	1.8-3.8	2.0-4.0	2.1-4.2	2.2-4.4	2.2-4.6	2.3-4.8	2.5-5.2	2.6-5.6	2.9-6.0
	Pa	20	22	25	27	29	32	38	44	50
	NC	23	25	26	27	29	30	32	34	36

NOTE:

All throws based on terminal velocities of 0.5-0.25 m/s

For Return Air Applications Multiply Pa x 0.75, NC Levels remain the same