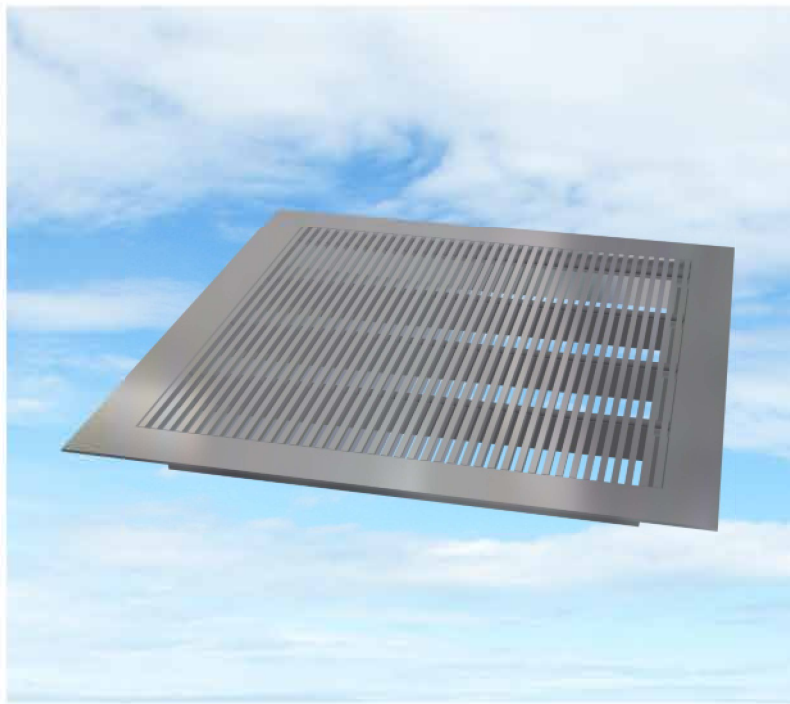


# Computer Room Floor Grilles Model CFG50



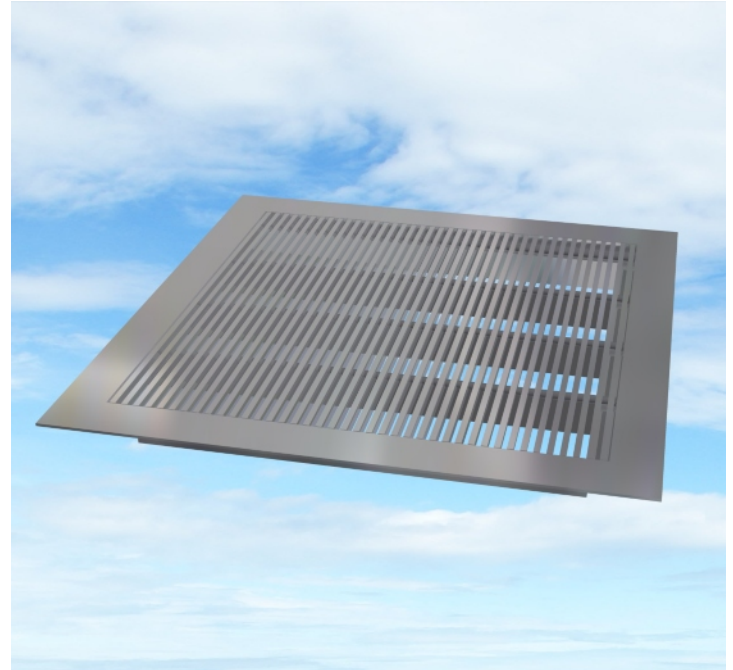
**AIR IN MOTION**

## Introduction

The Model CFG50 floor grilles have been specifically designed to suit current industry requirements. With more and more buildings employing raised access floors in all types of applications from offices, computer rooms, telephone exchanges to universities and scientific establishments. CFG50 model Floor Grilles are principally designed to replace a 600mm square tile in raised access floor systems and are suitable for medium duty applications such as offices and heavy duty applications such as computer rooms.

Model CFG50 grilles are aesthetically pleasing air distribution devices providing cool air exactly where required, eliminating high temperatures and reducing risk of equipment failure.

Model CFG50 floor grilles are suitable for both supply and return air and can be fitted with an optional opposed blade control damper (OBD) or hit and miss damper.



## Specification

- Model CFG50 floor grilles are constructed from high grade aluminium extrusions to EN755-9:2001 and heavy duty steel frame.
- The steel outer flanged frame for Model CFG50 is mitred and welded to form a robust and rigid frame.
- The Model CFG50 core comprises 6mm aluminium bars set on a 12.7mm pitch with the blades fully supported at the sides and across the grille centre for maximum strength.
- The Model CFG50 was independently tested to current floor grille specifications and complies to all loading and safety factor requirements.
- Weight : 17kg

## Testing

The model CFG50 medium or heavy duty floor grille complies with the requirements of the relevant sections of PSA MOB PF2 PS/SPU specification for Raised Access Floors March 1992 and IBM Management Design Guide For Raised Access Floors.

## Finishes

Supplied in a standard natural finish although alternative finishes in Nylon Coatings, Polyester Powder in matt or gloss are also available. Additionally, there is a special option of a Shadow Line finish.

Please note that polyester powder finishes are only suitable in locations where predicted foot traffic is light.

## Dimensions

Model CFG50 are supplied as a standard 599x599mm overall size to suit floor panel modules used by most manufacturers.

Special sizes are also available on request.

## Installation

Model CFG50 is a lay in floor grille for raised access flooring systems and can be re sited to suit changes in room layout without affecting the floor construction.

Model Type  
CFG50

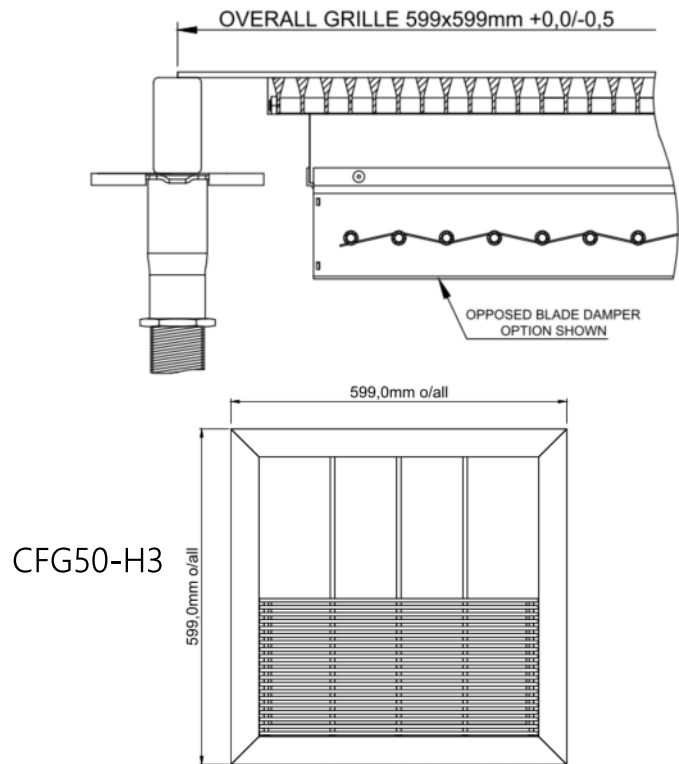
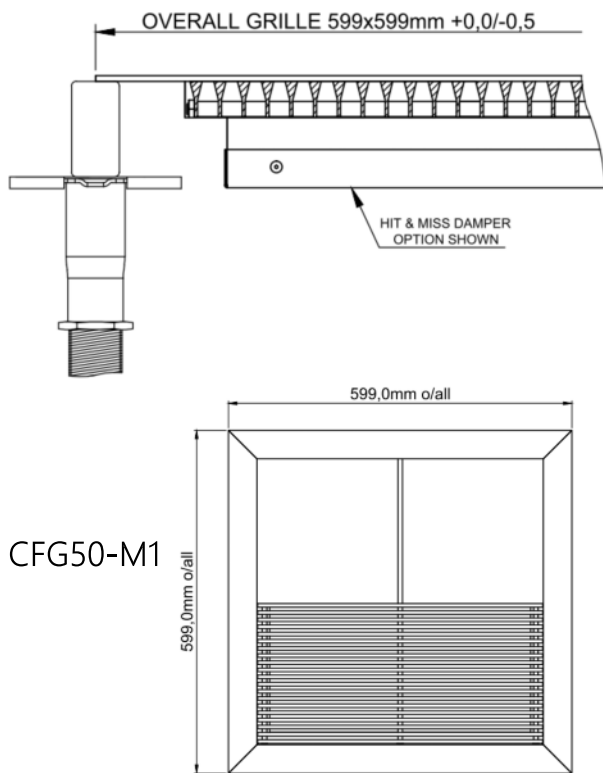
## Performance Guide and Application

Volume (l/s)	Total Pressure (Pa)	Free Area Velocity (m/s)	Duct Velocity (m/s)	Noise Level (NR)
200	6	1.75	0.99	26
300	12	2.55	1.44	27
400	19	3.33	1.88	31
500	25	4.22	2.33	42
600	32	5	2.77	46

Structural Class (Model)	Typical Application
Medium CFG50-M1	General office accommodation where it is expected that heavy equipment will be used. Load: 3.0kN over 25x25mm area.
Heavy CFG50-H3	Safety factor Load of 9kN Computer rooms with heavy equipment and other special applications Load: 4.5kN over 25x25mm area. Safety factor Load of 13.5kN

Based on 599 x 599mm overall grille size, other sizes are available on request.

Notes: All figures shown include an Opposed Blade Damper (OBD) set fully open. When no damper is required a reduction of both 2NR and 2Pa can be applied to the noise and pressure figures stated.



Ordering Codes

1. MODEL	2. APPLICATION	3. ACCESSORIES	4. FIXING	5. FINISH
CFG50	M1 Medium H3 Heavy	0 None V Opposed Blade Damper X Opposed Blade Damper Painted Black H Hit & Miss Damper	0 None 1 Special	0 Natural P Powder Coat N Nylon S Shadow Line 1 Special

Example: CFG50-H3-H-0-S CFG grille, Heavy Duty, Hit & Miss Damper, No Fixing, Shadow Line