

## JOINERY FRAME LINEAR BAR GRILLE



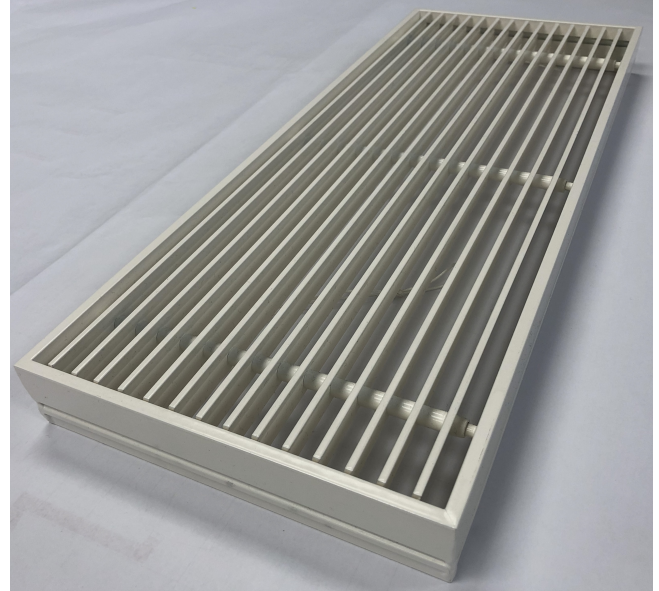
## *Joinery Frame Linear Bar Grille*

JPR joinery type J6 series aluminium linear bar grilles provide a clean, flangeless frame to satisfy the most demanding architectural demands and specifications.

The J6 outer sub-frame can be fixed through the frame into the opening with the core removed for a straight forward and simple installation.

Continuous grilles can be supplied in sections for butt joining on site with alignment plates.

Available in 2 frame profiles; standard J6 or the extended neck J6-S model, both have the discreet 6mm flangeless frame.



Sprung removable cores are provided which are easily installed into the track system.

Grilles are normally manufactured in single lengths of up to 1800mm. Longer grilles will be manufactured in open-ended sections and supplied with alignment plates for joining on site to give a continuous look.

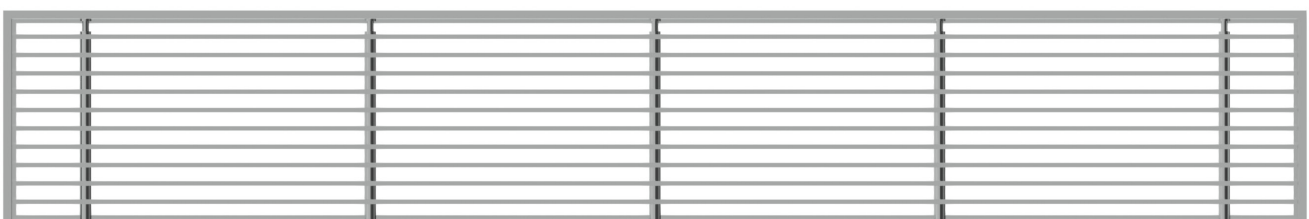
Varying blade profiles can be supplied with 0, 15 and 45 degree profiles available in. 3 and 6mm face profiles are available in the 0 and 15 degree options.

Commissioning of supply air is further aided by the JPR SVMB rear straightening vane to give the installer full left/right directional adjustment of supply air within the space.

Rear non-vision plates can also be supplied in 1000 mm long sections supplied loose for site cutting to prevent any direct sight lines through any dummy return air paths specified when using the J6 grilles for both supply and return air.

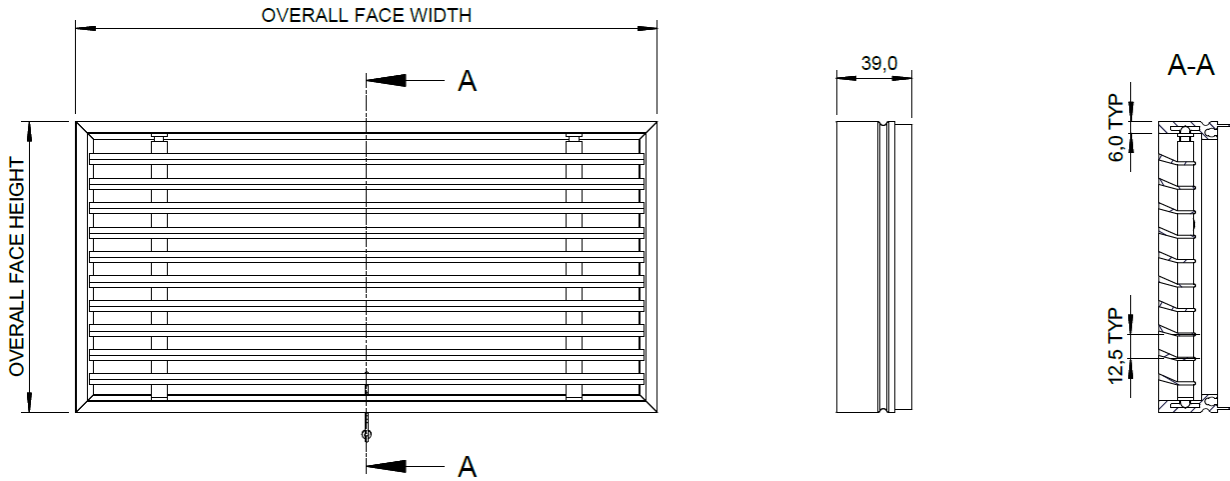
Blanking plates are also available which are also supplied in 1000 mm lengths for site cutting and installation where required.

Finishing is normally a powder coated RAL colour, other finishes are available.

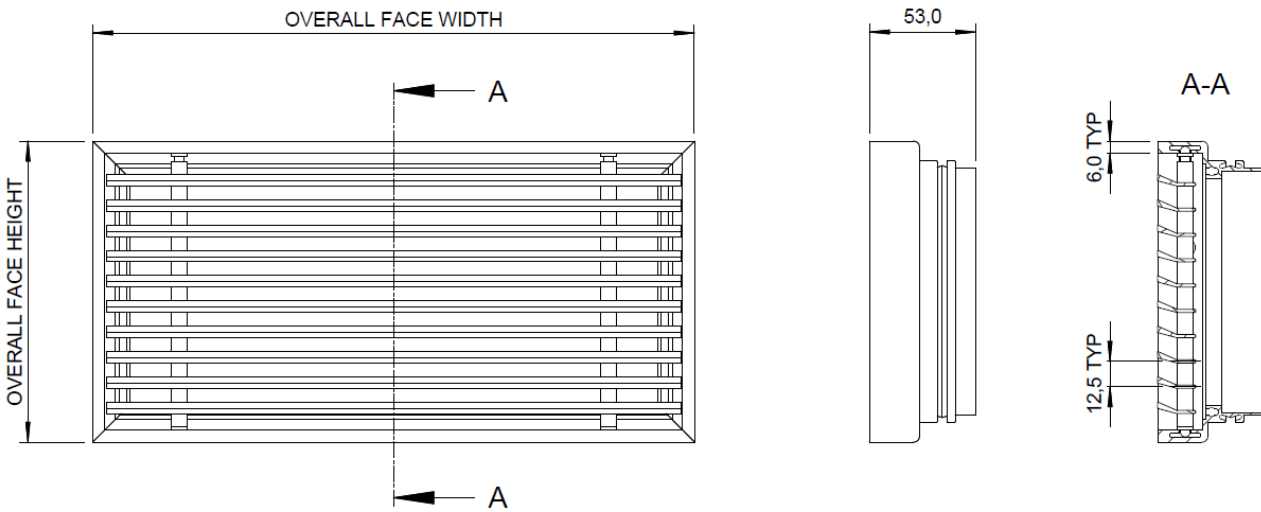


## Dimensional Information

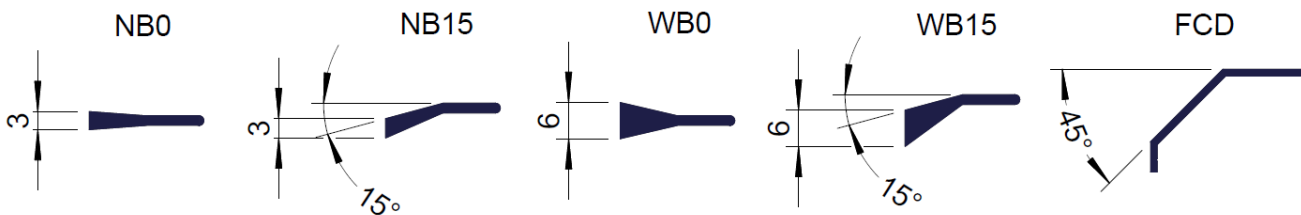
### J6 Joinery Frame



### J6-S Extended Joinery Frame



## Blade Profiles



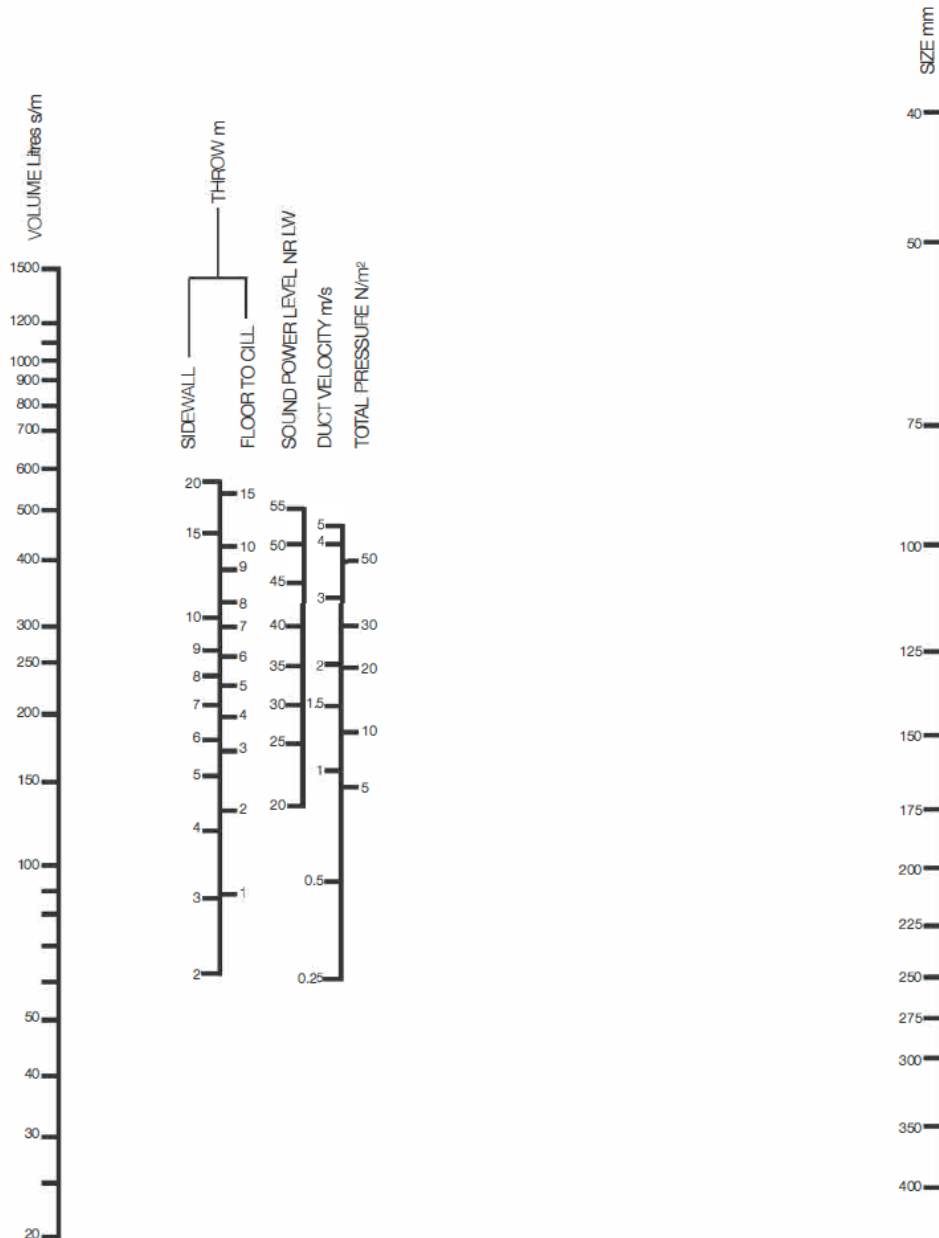
## Performance Data - Common sizes - Narrow Blade

| Throw (m) | 100mm High   |           |              | 130mm High   |           |              | 150mm High   |           |              |
|-----------|--------------|-----------|--------------|--------------|-----------|--------------|--------------|-----------|--------------|
|           | <i>l/s/m</i> | <i>Pa</i> | <i>Noise</i> | <i>l/s/m</i> | <i>Pa</i> | <i>Noise</i> | <i>l/s/m</i> | <i>Pa</i> | <i>Noise</i> |
| 1.6       | 40           | 3         | <25          | 45           | 3         | <25          | 48           | 3         | <25          |
| 2.0       | 50           | 3         | <25          | 54           | 3         | <25          | 60           | 3         | <25          |
| 2.5       | 63           | 4         | <25          | 70           | 3         | <25          | 80           | 4         | <25          |
| 3.0       | 80           | 5         | <25          | 88           | 4         | <25          | 98           | 4         | <25          |
| 3.5       | 100          | 9         | <25          | 110          | 6         | <25          | 125          | 5         | <25          |
| 4.0       | 120          | 10        | 30           | 135          | 9         | <25          | 150          | 8         | <25          |
| 4.5       | 138          | 15        | 30           | 150          | 10        | 30           | 165          | 10        | 30           |

| Throw (m) | 175mm High   |           |              | 200mm High   |           |              |
|-----------|--------------|-----------|--------------|--------------|-----------|--------------|
|           | <i>l/s/m</i> | <i>Pa</i> | <i>Noise</i> | <i>l/s/m</i> | <i>Pa</i> | <i>Noise</i> |
| 1.6       | 50           | 3         | <25          | 55           | 3         | <25          |
| 2.0       | 65           | 3         | <25          | 70           | 3         | <25          |
| 2.5       | 80           | 3         | <25          | 90           | 3         | <25          |
| 3.0       | 100          | 4         | <25          | 110          | 3         | <25          |
| 3.5       | 135          | 5         | <25          | 145          | 4         | <25          |
| 4.0       | 155          | 6         | <25          | 160          | 5         | <25          |
| 4.5       | 180          | 9         | <25          | 190          | 7         | <25          |

## Selection nomogram

### Models NB, WB Selection Nomogram



Values shown are for Model WB. For NB apply correction factors as shown below.

| NB Correction Factors |             |                |
|-----------------------|-------------|----------------|
| Throw                 | Sound Power | Total Pressure |
| x 0.8                 | - 2db       | x 0.8          |

All values include for fitted opposed blade dampers.  
 Throw based on 10° cooling to terminal velocity of 0.25m/s.  
 Side wall throw assumes flat ceiling not more than 0.5m above grille centre line.

## Ordering codes

| Frame   | Blade  | Core Type  | Accessories  | Fixings  | Finish   |
|---|--|--|--|--|--|
| <b>J6</b> - 6mm Joinery Frame<br><b>J6-S</b> - Extended 6mm Joinery Frame | <b>NB0</b> - 3mm / 0°<br><b>NB15</b> - 3mm / 15°<br><b>WB0</b> - 6mm / 0°<br><b>WB15</b> - 6mm / 15°<br><b>FCD</b> - 45° | <b>FC</b> - Fixed Core<br><b>RC</b> - Removable Core | <b>0</b> - None<br><b>OBD</b> - Opposed Blade Damper<br><b>SVMB</b> - Straightening Vanes<br><b>BP</b> - Blanking Plate<br><b>NVP</b> - Non Vision Plate<br><b>S</b> - Special | <b>F0</b> - None<br><b>U</b> - U Bracket<br><b>S</b> - Special | <b>Mill</b> - Mill Finish<br><b>RAL</b> - PPC to a RAL Colour<br><b>Other</b> - Please specify |

## Accessories

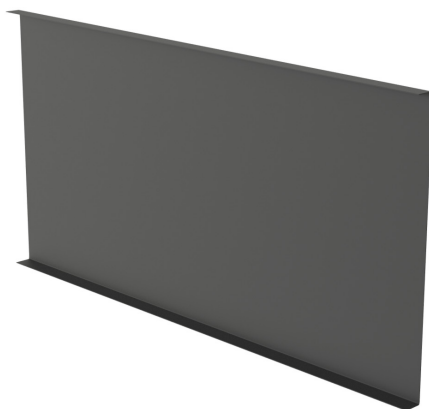
Opposed Blade Damper



Straightening Vanes



Blanking Plate



Non-vision Plate

